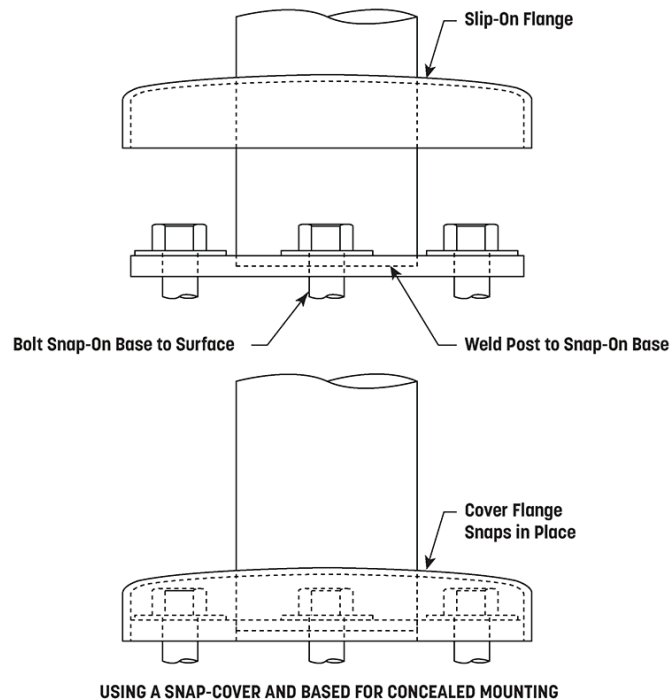
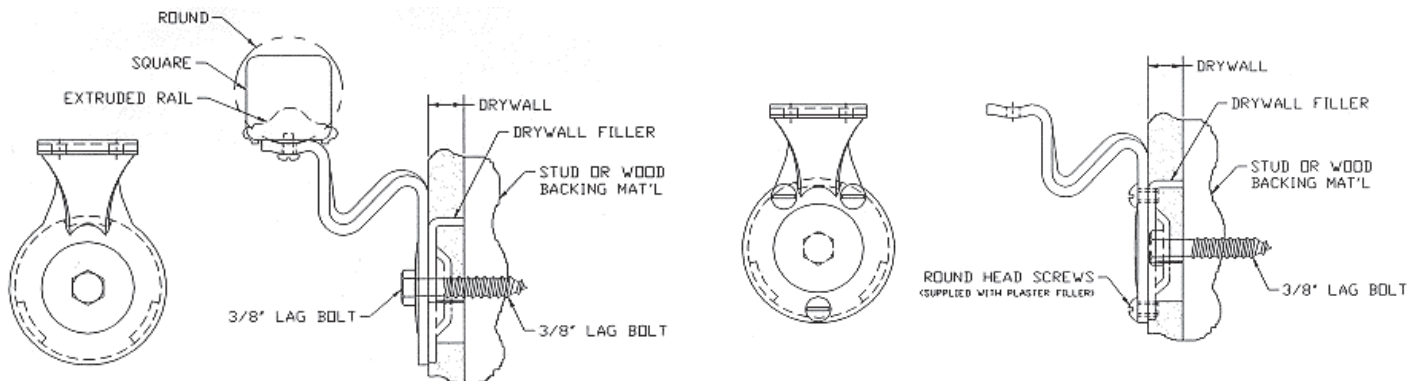


Snap-on Cover Flange and Base	2
Handrail Bracket with Wall Filler	2
C-Style Post Mount Bracket Assembly	3
Flat Base Flange Mounting	3
Flange Mounting with an Anchor Plate	4
Mounting a Bracket with a Hanger Bolt	5
Mounting Extruded and Extruded Style Handrail Brackets	6
Mounting Style U Handrail Brackets	7
Square Post Mounting	8
Oval Flange Assembly Details	9
Handrail Bracket Saddle Styles	10
Extra Heavy Flat Base Flange	11

Snap-on Cover Flange and Base



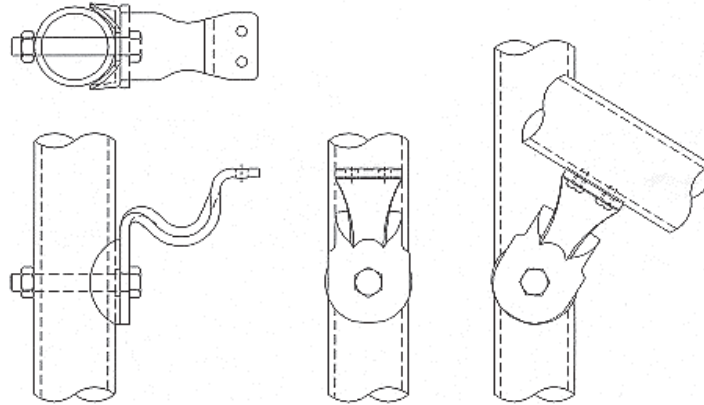
Handrail Bracket with Wall Filler



One hole bracket with plaster filler and lag screw plaster filler serves as a spacer only to prevent plaster from crushing.

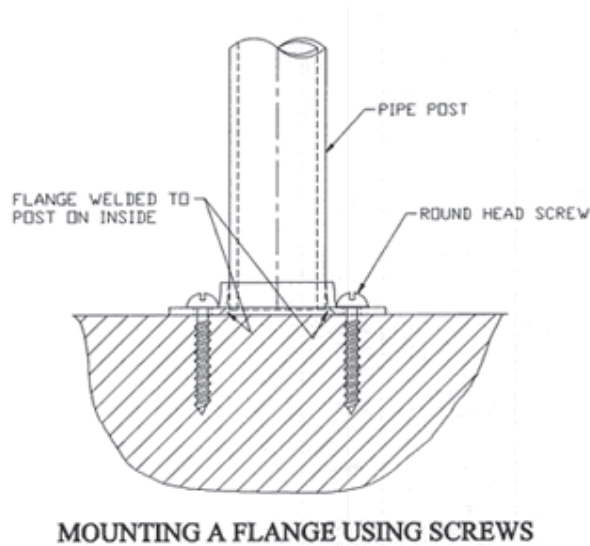
Three hole bracket with plaster filler and lag screw plaster filler serves as a spacer and an anchor plate.

C-Style Post Mount Bracket Assembly

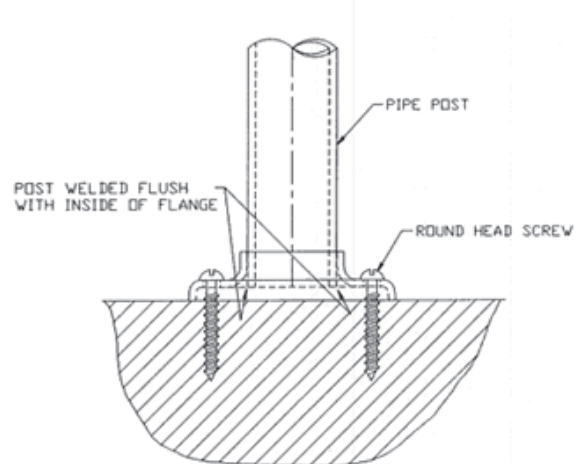
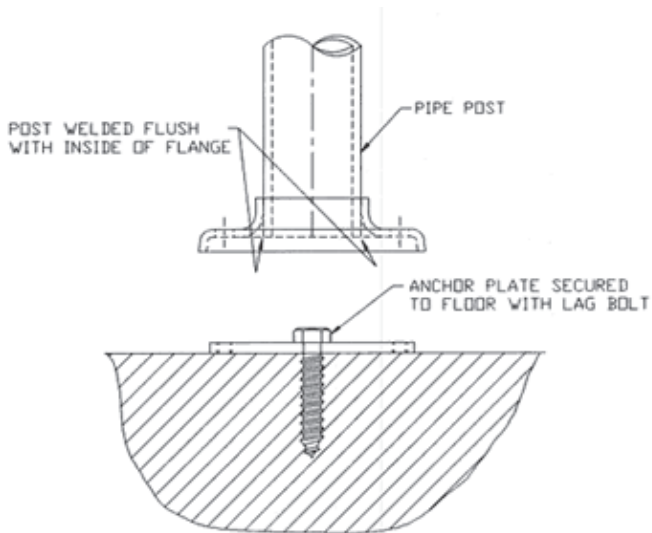


Pipe Post Filler for mounting "C" style brackets to 1 1/4", 1 1/2" or 2" pipe size posts.

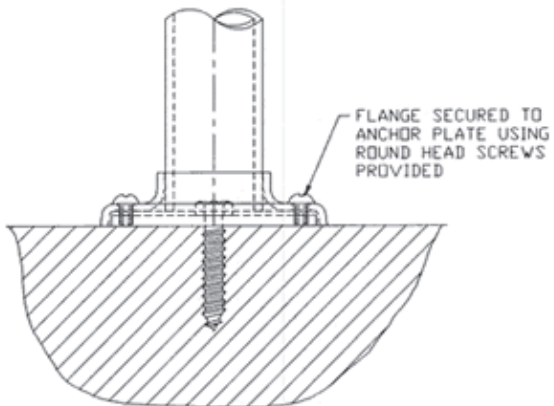
Flat Base Flange Mounting



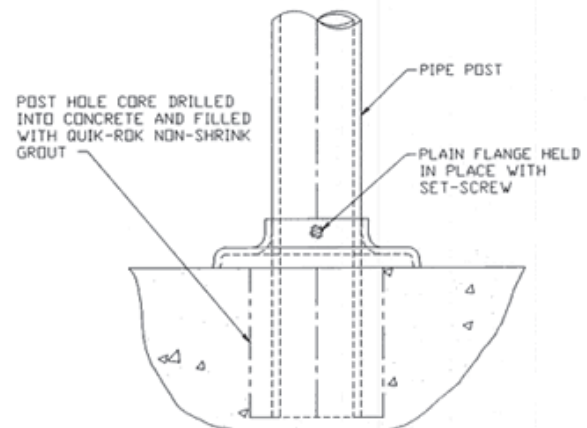
Flange Mounting with an Anchor Plate



MOUNTING A FLANGE USING SCREWS

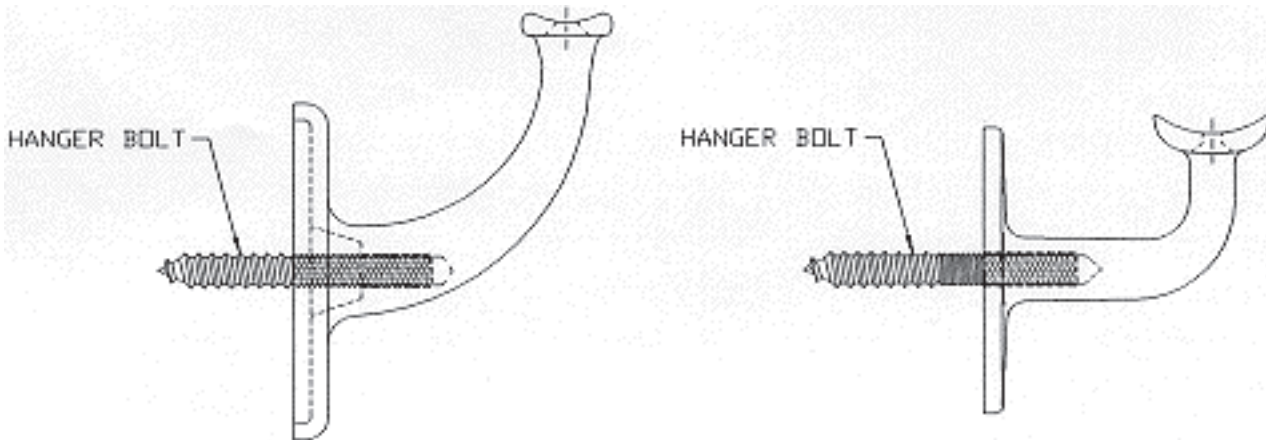


MOUNTING A FLANGE WITH AN ANCHOR PLATE

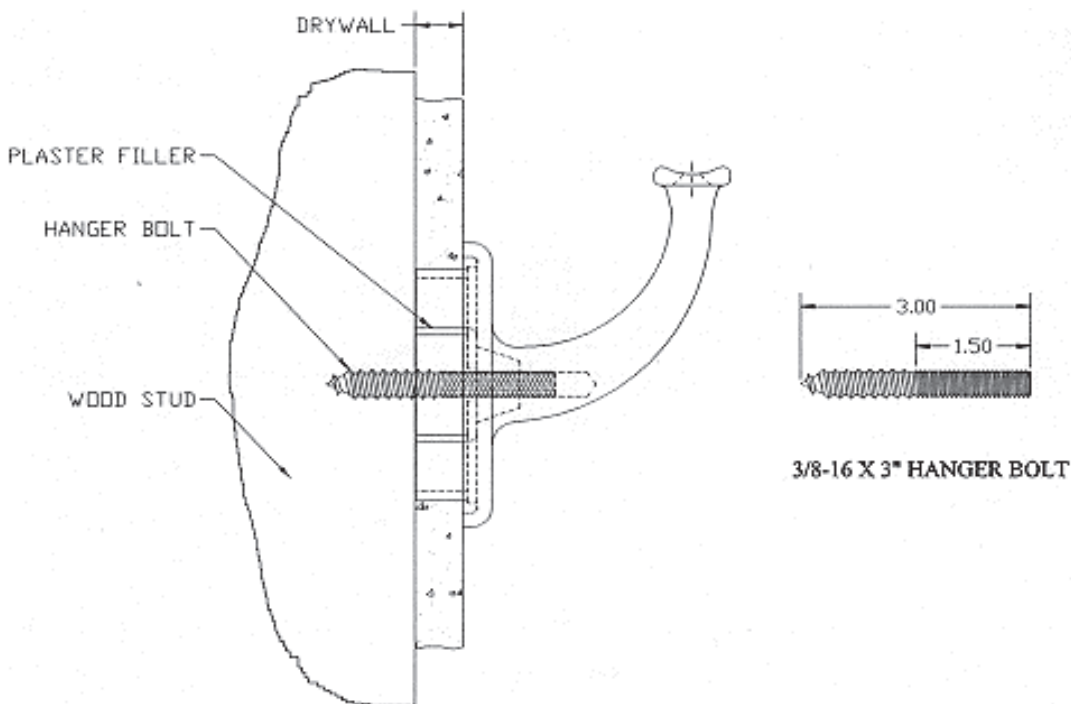


MOUNTING A POST USING A CORE DRILLED HOLE

Mounting a Bracket with a Hanger Bolt

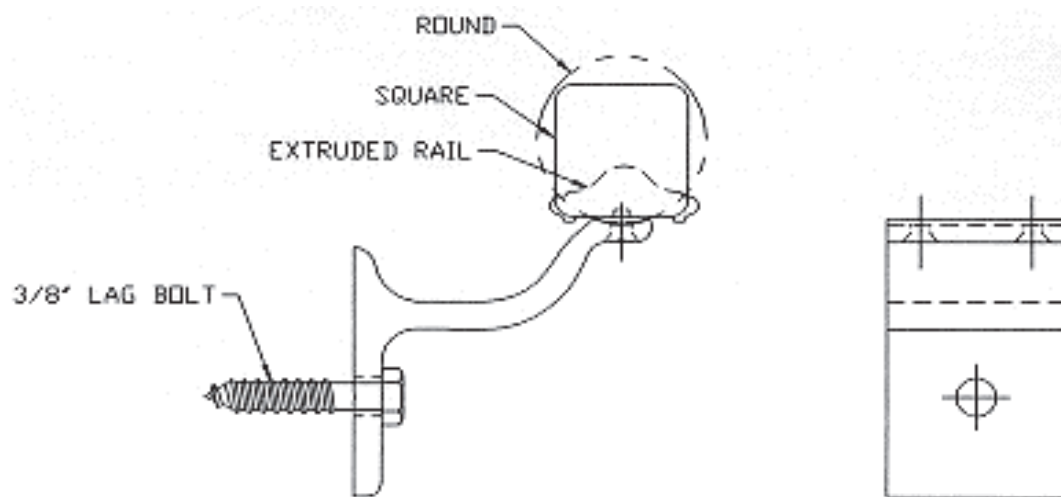


One hole heavy cast "U", "D" or "E" style brackets can be mounted with a hanger bolt. hanger bolts can be used with lag shields for mounting in concrete.

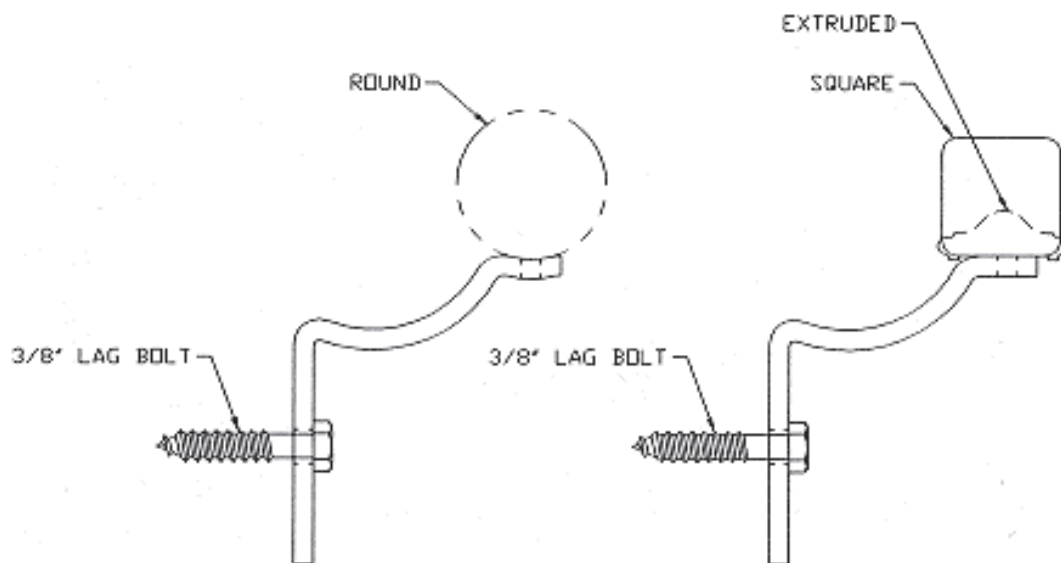


One hole heavy cast "U" style brackets can be mounted with a hanger bolt and used with a plaster filler to prevent drywall from crushing.

Mounting Extruded and Extruded Style Handrail Brackets

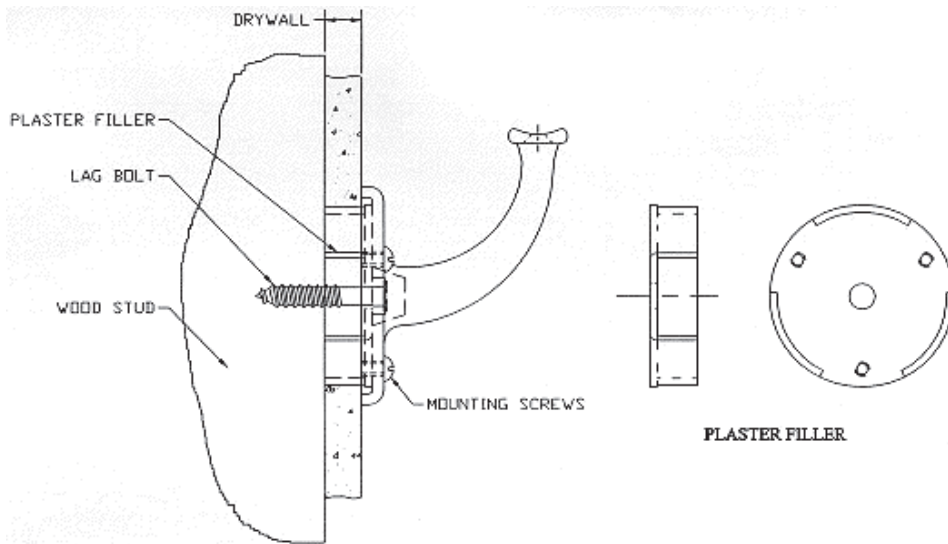


Extruded handrail brackets have universal saddle for use with round, square or extruded handrails and can be mounted with a lag bolt.

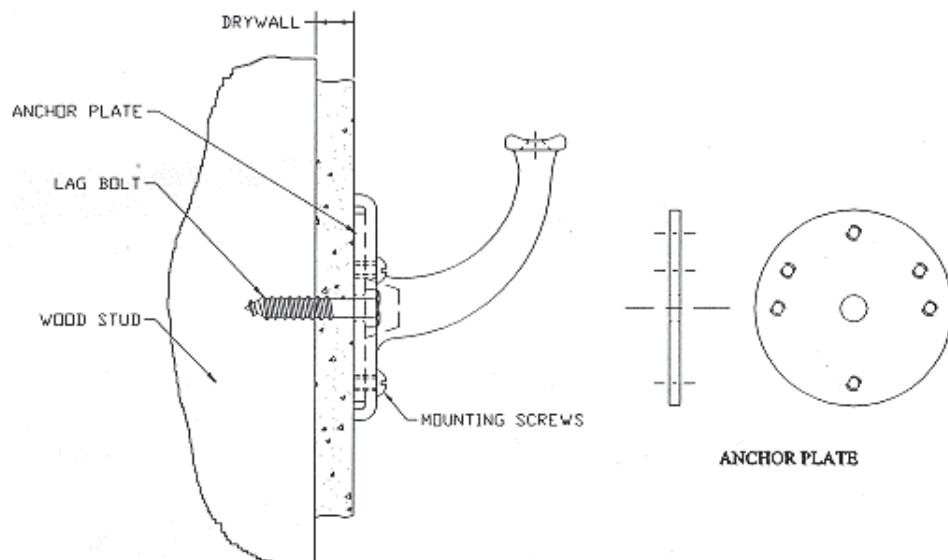


Extruded style brackets have separate part numbers for brackets with flat saddles and can be mounted with a lag bolt.

Mounting Style U Handrail Brackets

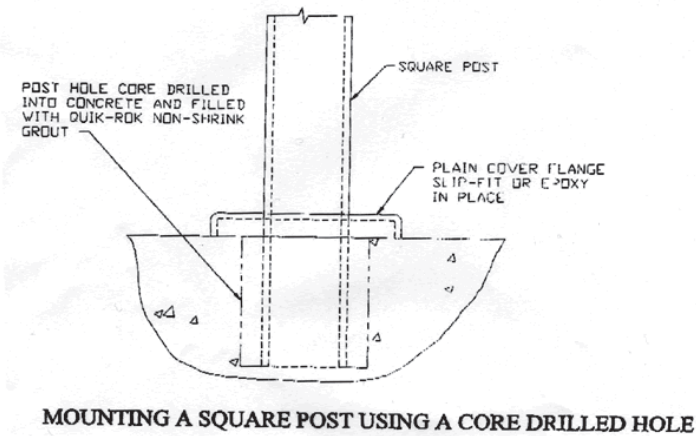
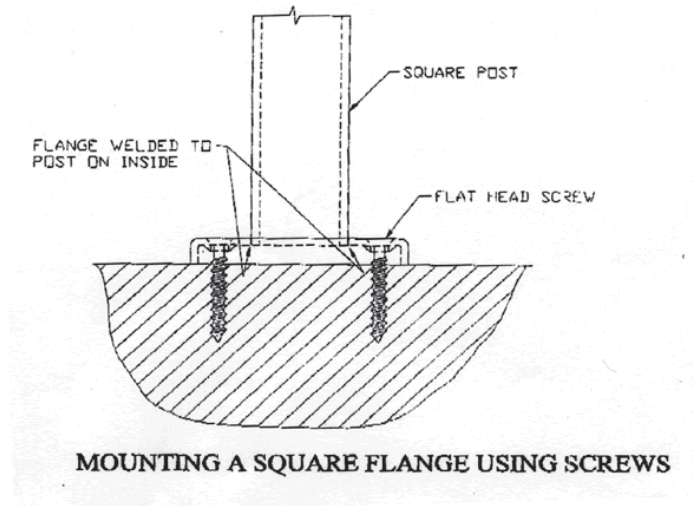


Three holes heavy cast "U" style brackets can be mounted using a lag bolt and a plaster filler which has three round head mounting screws included.

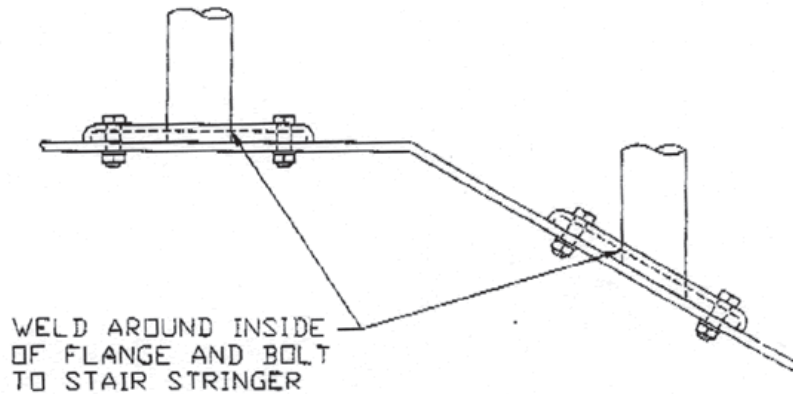


Two hole or three hole heavy cast "U" style brackets can be mounted using a lag bolt and anchor plate which has round head mounting screws included.

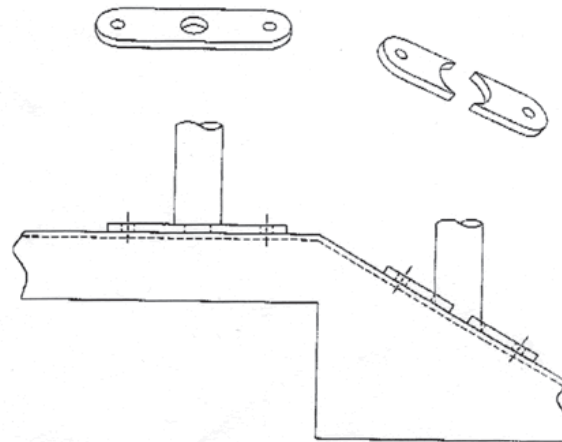
Square Post Mounting



Oval Flange Assembly Details

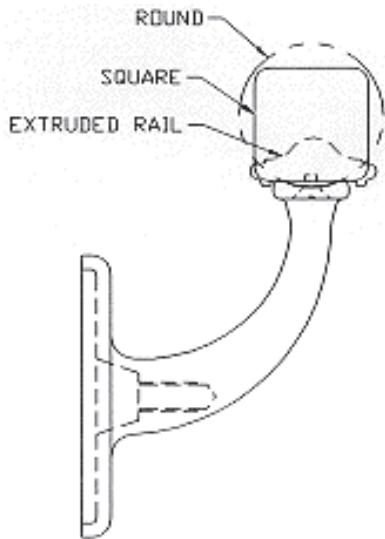


MOUNTING A POST USING OVAL STAIR FLANGES

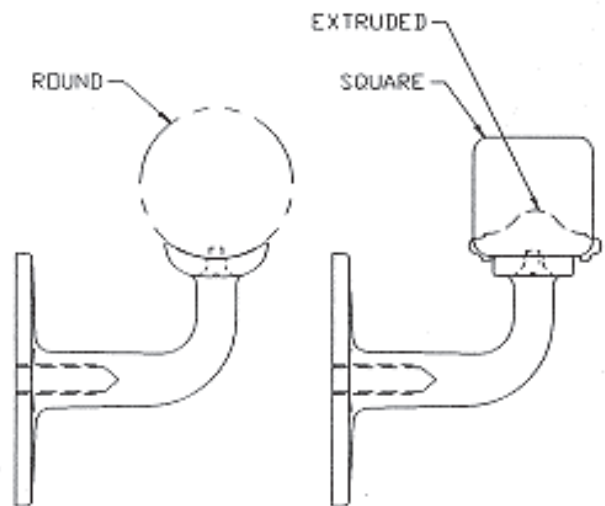
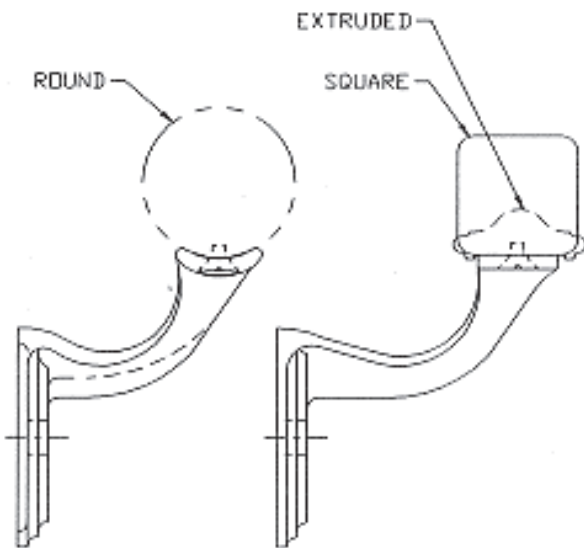


MOUNTING A POST USING HEAVY DUTY STRINGER MOUNTS

Handrail Bracket Saddle Styles

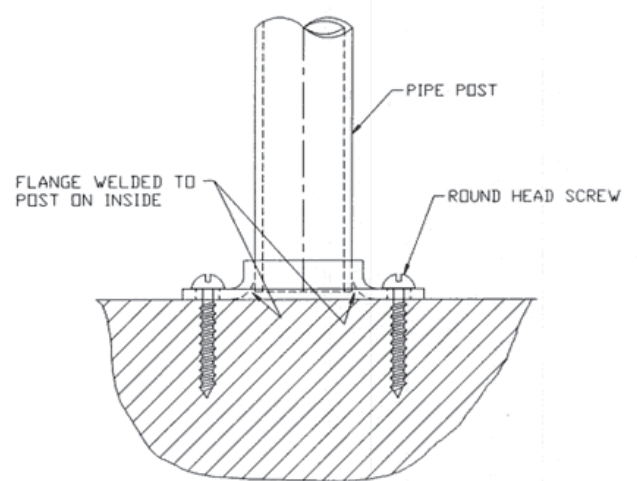
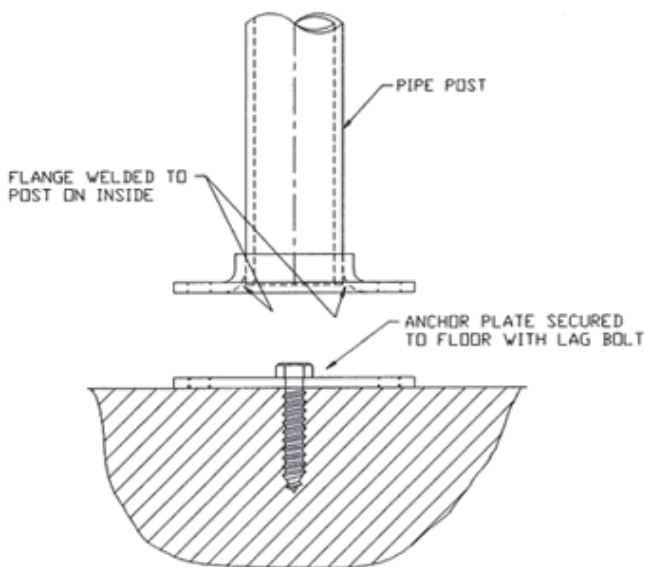


"U" Style handrail brackets have universal saddle for use with round, square or extruded handrails.

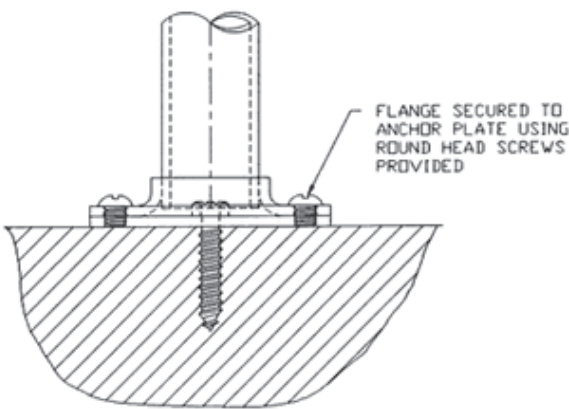


"D" & "E" style brackets have separate part numbers for brackets with flat saddles.

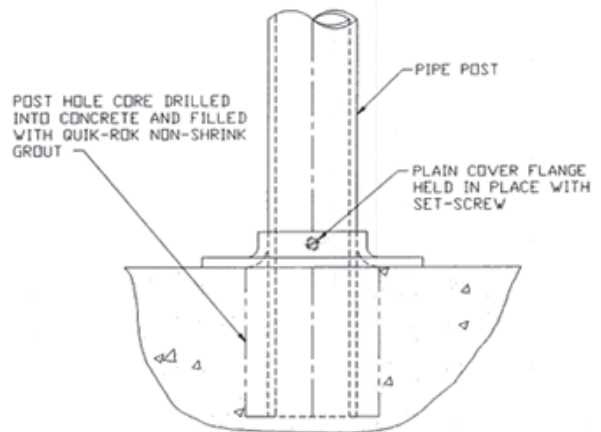
Extra Heavy Flat Base Flange



MOUNTING A FLANGE USING SCREWS



MOUNTING A FLANGE WITH AN ANCHOR PLATE



MOUNTING A POST USING A CORE DRILLED HOLE