

Series **5C
5H
5P**

NON-WELDED ALUMINUM PIPE RAILING

Meets OSHA, ADA, and BOCA Safety Criteria

SERIES 5H ALUMINUM PIPE RAILING

Superior Series 5H Aluminum Pipe Railing is designed to utilize all the advantages of aluminum, where strength, durability, and no-paint maintenance are key.

Components are easily assembled without welding by using mechanical fasteners at intersections, and epoxy structural adhesive at splice joints.

Superior Pipe Railing is factory-assembled and made to your exact specifications. Special curves or pipe radii can easily be fabricated to fit your needs. This results in further on-site fabrication savings, and makes a practical, sound investment for the budget-minded buyer.

Pipe railing is available in standard heights of 32", 36", 42", and 48", as well as custom heights.

CONCEALED FASTENERS

Posts and top rails for Pipe Railing are assembled to run in continuous lengths via concealed fasteners. Not only is this system stronger than one with cast tee and cross connections, but it also provides a contemporary design.

HANDRAIL

In addition to a guardrail system, Series 5H Aluminum Pipe Railing can also be used in handrail applications. Pipe handrails can be directly mounted on walls, stairways, or other barriers. Additionally, handrail can be mounted to Superior Pipe Picket, Heavy-Duty, Cable, and Architectural Railings.

SERIES 5H APPLICATION IMAGERY



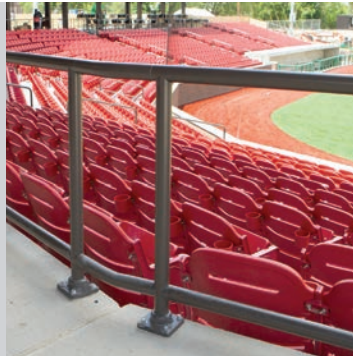
MUNICIPAL SETTINGS

Displayed within water treatment plants, village offices, and city parks.



COMMERCIAL BUILDINGS

Displayed within breweries, churches, stores, and more.



ATHLETIC VENUES

Displayed as handrail, guardrail, or both.



MULTI-FAMILY BUILDINGS

Displayed within hotels, motels, condos, and apartments.

SERIES 5P ALUMINUM PIPE PICKET RAILING

Superior Series 5P Pipe Picket Railing utilizes many of the same components as Series 5H Aluminum Pipe Railing, but with the added aesthetic, structural, and code advantages offered by pickets. Similar to the system's other components, these pipe pickets are made of high-quality, maintenance-free aluminum extrusions.

Series 5P Pipe Picket Railing is easily assembled without welding, with joints fastened by a combination of fasteners and epoxy splices, all stylishly concealed. Furthermore, pipe pickets are assembled with a tight drive-in-fit to ensure rigidity.

Each pipe picket project is pre-assembled in-house to the exact needs of the project. Field fabrication is minimal, saving time and money on the job site!

Pipe picket railing is available in standard heights of 32", 36", 42", and 48", and other custom heights upon request. These standard sizes act as a guideline to ensure code requirements are met.

HANDRAIL COMPATIBILITY

Due to their similar components, Series 5P Pipe Picket Railing makes for a great companion to Series 5H Aluminum Pipe Handrail. The nature of pipe picket railing allows for it to be classified as a guardrail, which, in conjunction with properly placed handrails, creates a system that is as beautiful as it is code compliant!

SERIES 5P APPLICATION IMAGERY



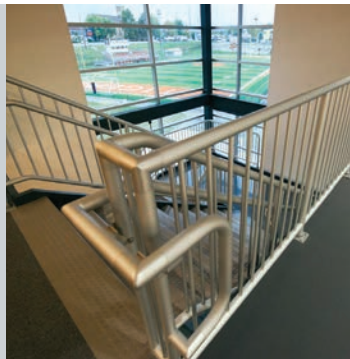
MUNICIPAL SETTINGS

Displayed within water treatment plants, village offices, and city parks.



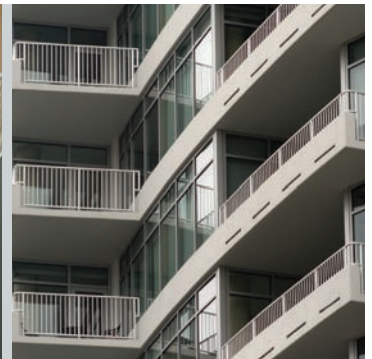
COMMERCIAL BUILDINGS

Displayed within breweries, churches, stores, and more.



EDUCATIONAL FACILITIES

Displayed within high-school's and college campuses.



MULTI-FAMILY BUILDINGS

Displayed within hotels, motels, condos, and apartments.

SERIES 5C PIPE CABLE RAILING

Superior Aluminum Series 5C Pipe Cable Railing creates a powerful combination of pipe framework with cable infills. This unique combo allows Superior Pipe Cable Railing to create an unprecedented combination of modern and industrial style sure to benefit many distinct architectural designs.

UNIQUE AESTHETIC BLENDING BOTH MODERN AND INDUSTRIAL STYLES

Switching out square components for round pipe transforms cable railing into a nearly unmatched blend of modern and industrial style without sacrificing unimpeded sightlines. Each pre-assembled, job-specific, section of pipe cable railing is built with a high-quality schedule 40 aluminum pipe framework. The material quality protects against rusting, warping, and rotting for the life of a project.

NO BULKY FITTINGS

Pipe cable railing systems with giant turnbuckles or other bulky fastening equipment is the norm in the marketplace. At Superior, we don't conform to what others find acceptable. Instead, all fasteners in Series 5C Pipe Cable Railing are confined to the insides of the pipe framework, saving the aesthetics of your project.

SERIES 5C APPLICATION IMAGERY



FINISHES

Series 5H Pipe Railing, 5P Pipe Picket Railing, and 5C Pipe Cable Railing is available in baked-on enamel, anodized, and duranodic finishes.

