

Series **9P**  
**9W**

# ALUMINUM PICKET RAILING

Meets OSHA, ADA, and ICC Safety Criteria



## SERIES 9P AND 9W ALUMINUM RAILING

Superior Series 9 Architectural Aluminum Railing offers the finest design features available on the market today. The highest quality aluminum alloy extrusions are used to provide maximum strength and support where it is needed most – in your installation.

Superior Architectural Railing utilizes all the advantages of aluminum: strong, durable, and rust- and corrosion-free. These characteristics make it a practical, sound investment for the budget-minded buyer.

The smart, contemporary design is an added plus. Our unique, no-weld design utilizes simple, cast aluminum fittings or machined openings for a no-hassle, easy installation.

Superior Railing is available in any height. Standard heights include 42" for commercial railing, 36" for residential railing, and 72" for pool railing. Superior railing comes in standard 6' lengths, as well as custom lengths, in 2-line or 3-line styles. Ordering standard 6' lengths reduces lead times and cost.

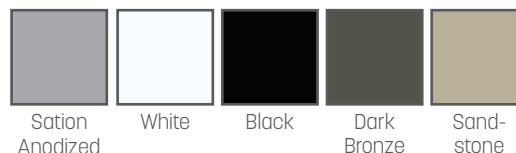
### CONCEALED PICKET SCREWS

Series 9 Architectural Railing features a screw cover to conceal picket screws on top and bottom rail assemblies for a cleaner, more streamlined look.

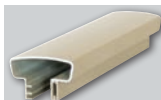


### FINISHES

Smart, decorative finishes add a distinctive touch. Whether PPG Duracron paint, anodized, or duranodic, these finishes are guaranteed to endure for years of continued service and maintenance-free beauty.



### TOP RAIL SELECTIONS

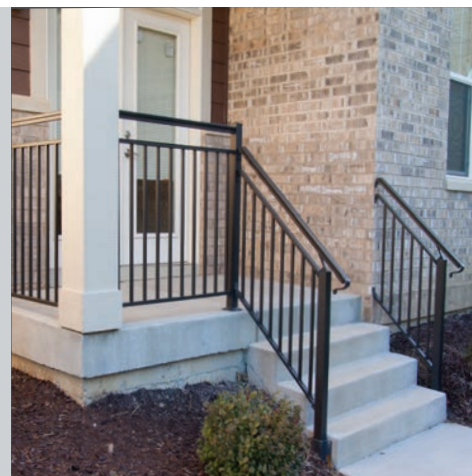
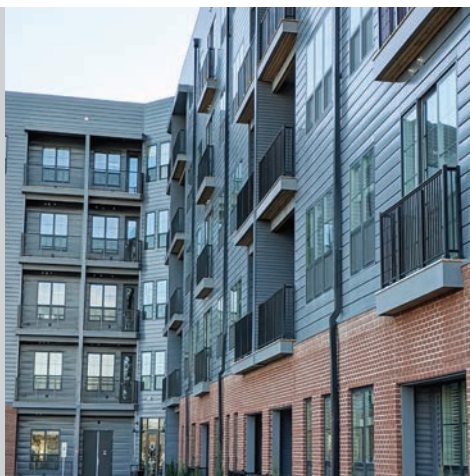


901 TOP RAIL  
2-1/2" W X 1-5/8" H



905 TOP RAIL  
2" W X 1-5/8" H

### SERIES 9P AND 9W APPLICATION IMAGERY



## SERIES 9P AND PW RAILING STYLE SYSTEMS

### STYLE A Standard Top Rail



### STYLE B Open Double Top Rail



### STYLE C Double Top Rail with Through Pickets

Pickets can be spaced to preference.



### STYLE D Handrail with Mounting Brackets

905 Top Rail or Superior Series 5 Pipe  
Rail can be used for hand rail applications.



### INTERCHANGEABLE TOP RAIL

All 901 and 905 top rails are interchangeable and come paired with 903 bottom rail. See examples of 9P Rail below.



**Option 1**  
905 Top Rail  
903 Bottom Rail



**Option 2**  
901 Top Rail  
903 Bottom Rail



**Option 5**  
905 Top Rail  
903 Bottom Rail



**Option 6**  
901 Top Rail  
903 Bottom Rail

Note: 3/4" sq. pickets and 3/4" x 1-1/2" pickets are also interchangeable.

### INTERCHANGEABLE POST

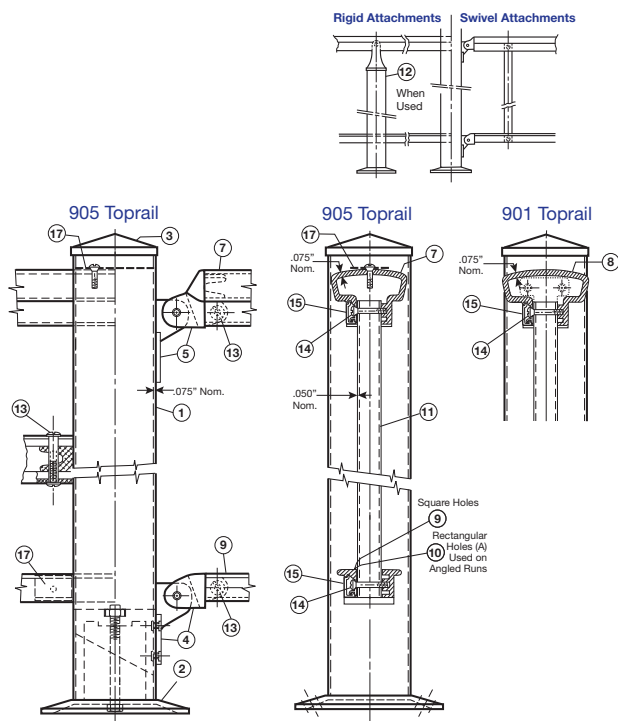
All 2" or 2-1/2" square posts can be substituted with a 4" square post.



In this 9P rail application, 4" square posts are used for the end posts and a 2-1/2" square post is used for the crossover post.

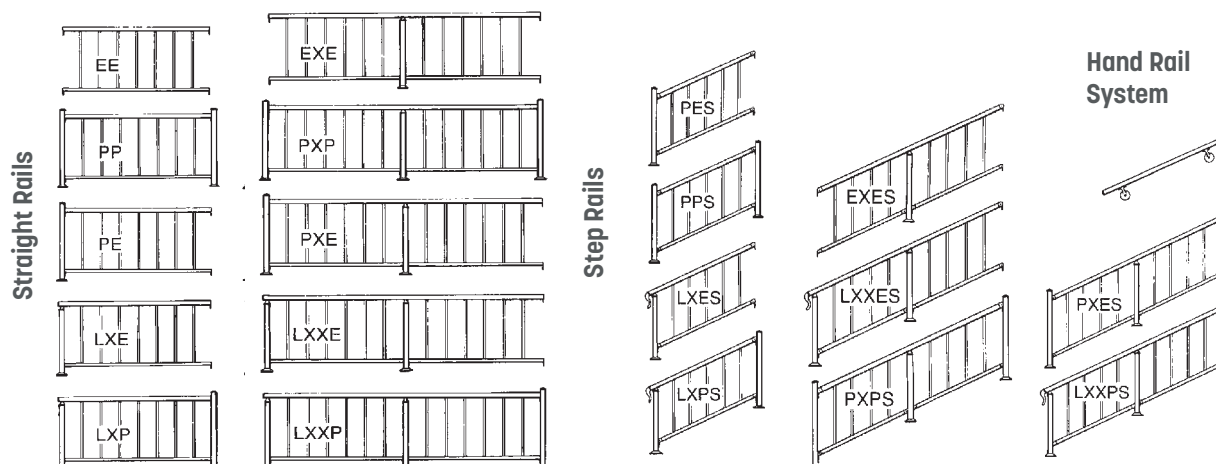
Machined post openings are available for 2-1/2" and 4" square posts. A 4" machined post opening is shown above.

## SERIES 9P ASSEMBLY IDENTIFICATION



1. 990 2-1/2" Tube .075" Wall
2. 957 Base Assembly
3. 950 Cap
4. 956 Bottom Rail Swivel Assem.
5. 955 Top Rail Swivel Assem.
6. 940 Top & Bottom Rigid Attachment
7. 905 Top Rail 2" w x 1-5/8" h
8. 901 Top Rail 2-1/2" w x 1-5/8" h
9. 903 Bottom Rail
10. 904 Bottom Rail (A)
11. 9B 3/4" Square Picket
12. 93M Crossover Post
13. 912 8-32 Binder Bolt
14. 911 Picket Screws
15. 907 Screw Cover
16. 915 5/32" Dia. Rivets
17. 924 Rail Tab
18. 923 Rail Wedge

## SERIES 9P DESIGN SELECTIONS



**SERIES 9P PARTS DESCRIPTION****RAILS**

- 901 Top Rail - 2-1/2" w x 1-5/8" h  
18' & 24' Lgths.
- 903 Bottom Rail (Sq. Hole)  
1-5/8" w x 3/4" h, 18' Lgths.
- 904 Bottom Rail (Rect. Hole)  
1-5/8" w x 3/4" h, 18' Lgths.
- 905 Top Rail - 2" w x 1-5/8" h  
18' & 24' Lgths.
- 907 Screw Cover (For Top & Bott. Rail)  
18' Lgths.
- 909 Bottom Rail (1-1/2" w Hole),  
18' Lgths.

**FASTENERS**

- 310 Rail Tab Screw
- 911 Picket Screws
- 912 Rail Bracket Binder Bolt
- 915 Post Bracket Rivet 5/32"

**POSTS & PICKETS**

- 9B \_\_\_ Picket 3/4" Sq.- 4-1/2" Centers
- 9C \_\_\_ Picket 3/4" Sq.- 6" Centers
- 9D \_\_\_ Picket 3/4" x 1-1/2"
- 90 \_\_\_ Wall Plate
- 91 \_\_\_ End Post (Brackets)
- 91M \_\_\_ End Post (Machined Openings)
- 92 \_\_\_ Swivel Post
- 93 \_\_\_ Crossover Post (Brackets)
- 93M \_\_\_ Crossover Post (Machined Openings)
- 94 \_\_\_ Bottom Step Post
- 95 \_\_\_ Section Post (Brackets)
- 95M \_\_\_ Section Post (Machined Openings)
- 96 \_\_\_ Top Step Straight Post (Brackets)
- 96M \_\_\_ Top Step Straight Post (Machined Openings)
- 97 \_\_\_ Intermediate Step Post
- 98 \_\_\_ Corner Post (Brackets)
- 98M \_\_\_ Corner Post (Machined Openings)
- 99 \_\_\_ Top Step Corner Post (Brackets)
- 99M \_\_\_ Top Step Corner Post (Machined Openings)

Specify Railing Height:  
32", 36", 42" or 48"

**BASES**

- 917 Wedge Base for 4" Post
- 919 2" Slip Over Base
- 920 2-1/2" Slip Over Base
- 957 Wedge Base for 2-1/2" Post
- 968 Wedge Base for 2" Post
- 972 Heavy-Duty Base for 4" Post
- 973 Heavy-Duty Base for 2-1/2" Post
- 974 Heavy-Duty Base for 2" Post
- 975 Side Mount Brkt. for 2-1/2" Post
- 976 Corner Side Mount Brkt. for 2-1/2" Post
- 977 Side Mount Bracket for 2" Post
- 998 Corner Side Mount Brkt. for 2" Post

**TUBING**

- 990 2-1/2" Sq. - 16' white only & 18' Lgths.
- 377 2" Sq. - 16' white only & 18' Lgths.
- 380 4" Sq. - 16' Length

**CAST FITTINGS**

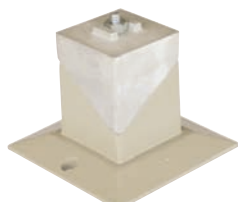
- 730 Cap for 4" Post
- 906 17" Heart Scroll
- 908 Picket Collar
- 913 Internal splice for #905 Top Rail
- 914 Post Ball Cap for 4" Post with  
4" Diameter Ball
- 921 3/4" Square Picket Base
- 922 3/4" x 1-1/2" Picket Base
- 923 Rail Wedge
- 924 Rail Tab
- 929 Cast "X" Insert (4" Opening)
- 930 Cast Picket Spear - 4" High
- 933T 2-Way Swivel Bracket - 2"
- 935 3-3/4" OD Double Ring
- 936 Hanging Rail "L" Brackets
- 937 3-3/4" Cast Diamond
- 938 Angle Crossover Cap for 2" Step  
Post
- 939T Adj. End Fitting (for 905)
- 940 End Brkt. for Top & Bottom Rail
- 940B End Brkt. for #903 Bottom Rail
- 940C End Brkt. for 901 Top Rail Only

- 941 17" Cast "Fleur De-Lis" Insert
- 942 Cap for 2" Post
- 943 Post Ball Cap for 4" Post with  
2-1/2" Diameter Ball
- 947T Adj. End Fitting Top (for 901)
- 947B Adj. End Fitting Bottom
- 950 Cap for 2-1/2" Post
- 951 Post Ball Cap for 2-1/2" Post
- 952 Top Rail Hinge 2-1/2" w
- 953T 2-Way Swivel Bracket - 2-1/2"
- 953B 2-Way Swivel Bottom
- 954T Horiz. Swivel Brkt. Top - 2-1/2"
- 954B Horiz. Swivel Brkt. Bottom
- 955 Vertical Swivel Top 2-1/2" w
- 956 Vertical Swivel Bottom
- 958 Angle Ramp Plate
- 959 Vertical Swivel Top 2" w
- 960 Crossover Cap for 2" Post
- 962 Top Rail Hinge 2" w
- 963 Top Rail Corner 2" w
- 964 Top Rail Corner 2-1/2" w
- 965 Crossover Cap for 2-1/2" Post
- 966 Crossover Cap for 2-1/2" Post (Flat)
- 969T Horiz. Swivel Brkt. Top - 2" w
- 970 Angle Crossover Cap for 2-1/2" Step  
Post
- 971 Crossover Cap for 4" Post
- 978L Wall Return - LH for #905 Top Rail
- 978R Wall Return - RH for #905 Top Rail
- 979 End Cap for #905 Top Rail
- 980 End Cap for #901 Top Rail
- 981 End Cap for Bottom Rail
- 983 Lambs Tongue for #901 Top Rail
- 985 Wall Brkt. for Handrail
- 986 Lambs Tongue for #905 Top Rail
- 988 90° Double Swivel for #905 Top Rail
- 989 Post Ball Cap for 2" Post
- 992 Post Finial for 2-1/2" Post
- 993 Cast Rose Snap-on Picket Insert
- 994 Cast Grape Snap-on Picket Insert
- 995 Cast Oak Snap-on Picket Insert
- 997 Cast "X" Insert (6" Opening)



## SERIES 9P BASE OPTIONS

A variety of base options are available to fit any installation requirements. Series 9P Railing can be base mounted with wedge-type or heavy-duty bases, side mounted with brackets, or embedded into concrete using an elongated post with a slip-over base.



Wedge Base  
917 / 957 / 968



Side-Mount  
Corner Base  
976 / 998



Side-Mount Base  
975 / 977

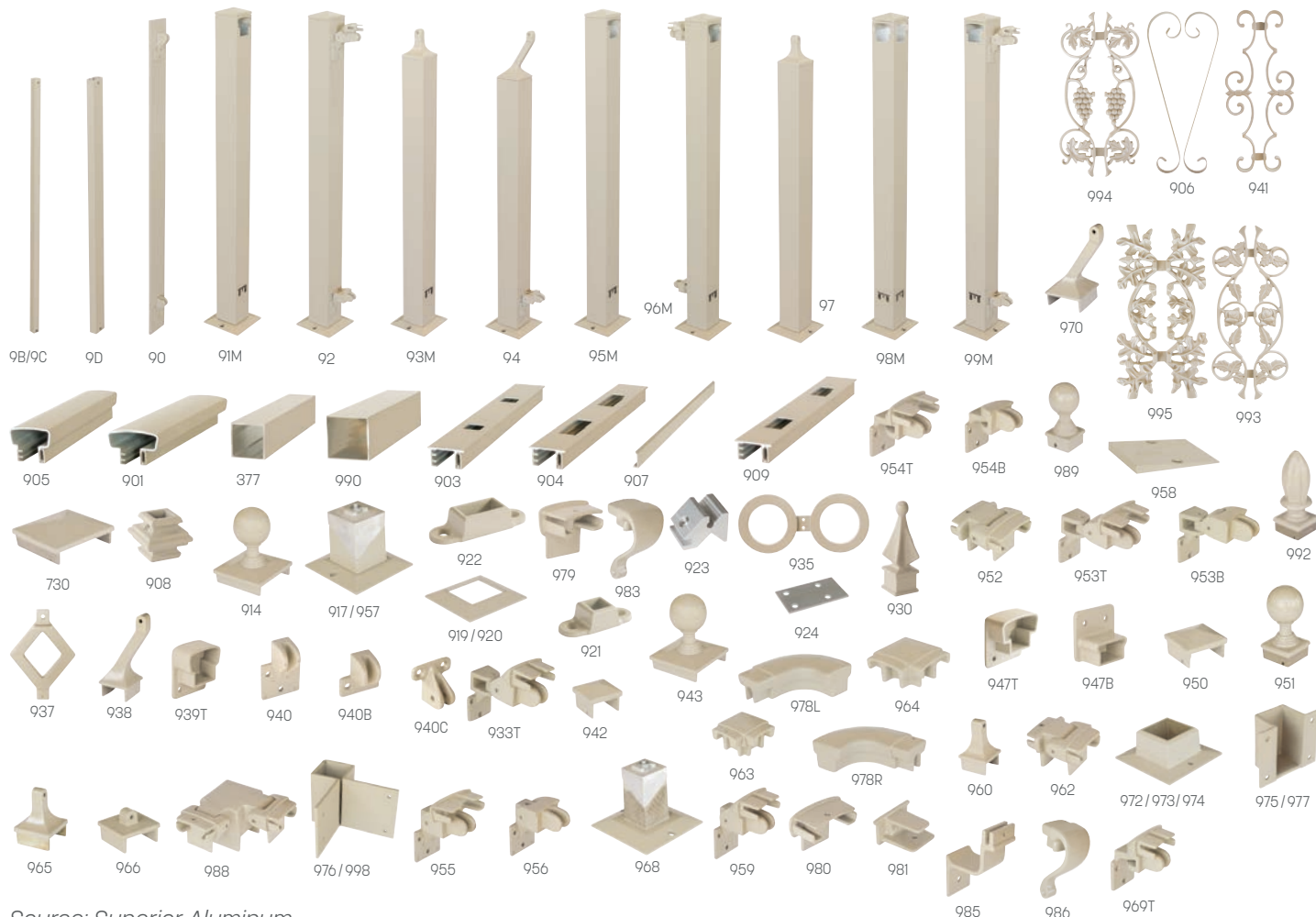


Heavy-Duty Base  
972 / 973 / 974



Slip-Over Base for  
Embedded Posts  
919 / 920

## SERIES 9P COMPONENT PARTS



Source: Superior Aluminum