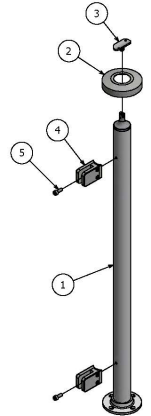


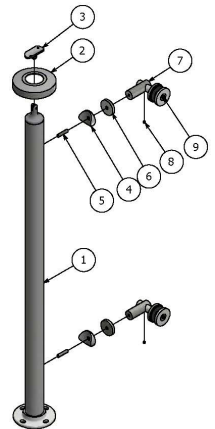
ROUND POST | SURFACE MOUNT | GLASS CLIPS | MID & END POST

1. Plumbing Legato Posts. Before completing attachment of Legato post/posts to substrate - take all necessary steps to assure that the mounted post/posts are adjusted such that the post/posts are plumb to 1/16" at an extended height of 42". Spend the time required to plumb the post/posts to this tolerance to endure correct alignment of all components. (Anchor bolts are not included)
2. Install Decorative Flange Cover. Slide decorative flange cover (2) over post (1) and locate securely over flange base.
3. Install Saddle Bracket. Install saddle bracket (3) to top of post (1) using the Allen head screw provided.
4. Install Glass Clips. Disassemble glass clips (4) by removing two Allen head clamping screws. Take "L" shape part of glass clip and using Allen head cap screw (5) secure "L" shape glass clip to post (1) using pre-tapped holes. Repeat process for all clips.
5. Install Hand Rail. Place handrail on top of saddle bracket/brackets (3) and temporarily secure in place. Using pre-drilled holes in saddle bracket (3) mark handrail. Drill handrail (#25 drill bit or 0.1495 diameter hole) and secure to saddle bracket (3) using a #10 sheet metal screw. (Not included)
6. Install Glass Infill Panel. Select correct gasket from 3 sets provided with glass clips to suit glass thickness being used (1/2", 9/16", 5/8"). Locate selected gasket into both sides of the glass clip. Install security pin provided with glass clip into location hole in installed half of glass clip. Have someone hold the glass panel in place between the glass clips while the remaining pressure plate halves of the glass clips are installed using the two countersunk head screws provided with each clip. Ensure infill panel is level.



ROUND POST | SURFACE MOUNT | SPIDER CLIPS | END & MID POST

1. Plumbing Legato Posts. Before completing attachment of Legato post/posts to substrate - take all necessary steps to assure that the mounted post/posts are adjusted such that the post/posts are plumb to 1/16" at an extended height of 42". Spend the time required to plumb the post/posts to this tolerance to endure correct alignment of all components.
2. Install Decorative Flange Cover. Slide decorative flange cover (2) over post (1) and locate securely over flange base.
3. Install Saddle Bracket. Install saddle bracket (3) to top of post (1) using the Allen head screw provided.
4. Install Spider Clips. Disassemble spider clip assembly by separating parts (4), (5) & (6) from main clip body. Take threaded stud (5) and screw into post (1) using pre-tapped holes. Repeat process for all clips. Slide cooped spacer (4) over threaded stud (5). Repeat process for flat spacer disk (6). Take remaining main spider arm assembly (7) and wind onto threaded stud (5) ensuring glass clamping arm of fitting is horizontal to finished floor surface.
5. Install Glass Infill Panel. Remove countersunk fixing screw (9) and circular metal disk, black circular gaskets and plastic tubular isolation grommet. Repeat process for all spider clips. Have someone hold the glass panel in place between the spider clips. Make sure a circular black gasket is located between the glass and inner circular spider clip pressure plate. Place tubular plastic grommet in hole within glass panel. Place second circular back gasket and circular out pressure disk onto face of glass. Pass countersunk screw (9) through hole in outer disk, thru hole in glass and tighten (10-15ft-lbf torque) into main spider clip body (7). Ensure infill panel is level.
6. Install Hand Rail. Place handrail on top of saddle bracket/brackets (3) and temporarily secure in place. Using pre-drilled holes in saddle bracket (3) mark handrail. Drill handrail and secure to saddle bracket (3) using a #10 sheet metal screw. (Not included)



ROUND POST | SURFACE MOUNT | FLAT CLIPS | END & MID POST

1. Plumbing Legato Posts. Before completing attachment of Legato post/posts to substrate - take all necessary steps to assure that the mounted post/posts are adjusted such that the post/posts are plumb to 1/16" at an extended height of 42". Spend the time required to plumb the post/posts to this tolerance to endure correct alignment of all components.
2. Install Decorative Flange Cover. Slide decorative flange cover (2) over post (1) and locate securely over flange base.
3. Install Saddle Bracket. Install saddle bracket (3) to top of post (1) using the Allen head screw provided.
4. Install Flat Clips. Disassemble spider clip assembly by separating parts (4) & (5). Locate part (4) and (5) in line with two pre-tapped holes in post (1). Install parts (4) & (5) to post using two countersunk head screws (6).
5. Install Glass Infill Panel. Remove flat head compression fixing screw (7) and circular metal disk, black circular gaskets and plastic tubular isolation grommet. Repeat process for all spider clips. Have someone hold the glass panel in place between the spider clips. Make sure a circular black gaskets is located between the glass and inner circular spider clip pressure plate. Place tubular plastic grommet in hole within glass panel. Place second circular black gasket and circular out pressure disk onto face of glass. Pass flat head compression fixing (7) thru hole in glass and tighten (10-15ft-lbf torque) into main spider clip body (7). Ensure infill panel is level.
6. Install Hand Rail. Place handrail on top of saddle bracket/brackets (3) and temporarily secure in place. Using pre-drilled holes in saddle bracket (3) mark handrail. Drill handrail and secure to saddle bracket (3) using a #10 sheet metal screw. (Not included)

