

# BANTAM™ SQ

## Installation Instructions

Another Lumenrail® Component for Life Safety and Light

WARNING: TO REDUCE RISK OF ELECTRIC SHOCK, TURN OFF THE ELECTRICAL SUPPLY BEFORE INSTALLING OR SERVICING THE SYSTEM. FAILURE TO DO SO MAY RESULT IN SERIOUS INJURY AND/OR DAMAGE TO THE COMPONENTS.



### LIGHTING SAFETY INSTRUCTIONS

READ THE INSTALLATION INSTRUCTIONS IN THEIR ENTIRETY BEFORE INSTALLING. IT IS IMPORTANT TO LEAVE THESE INSTRUCTIONS WITH THE OWNER OR FACILITY MANAGER OF THE BUILDING FOR FUTURE REFERENCE.

- **Caution:** Installation must be performed by a licensed electrician and all wiring must conform to local, state and national electrical codes
- LED driver: 24VDC, Class 2, configured in a listed system of components
- Mount remote driver(s) in a NEMA rated enclosure
- Systems may be used in a wet location with a suitably rated enclosure and connections
- All electrical components must be grounded and Wagner Architectural recommends connection to a GFCI circuit per local codes and/or the NEC
- This product must be installed in a manner consistent with its intended use
- For trouble-shooting, installation questions and replacement component orders, contact Wagner at 888-243-6914



SCAN QR CODE  
for technical information,  
downloads and instructions.

**Note:** Bantam™ SQ is a 24VDC, low-voltage luminaire. Do not connect Bantam™ SQ directly to line voltage (120-277-347VAC) or unregulated 24VDC low-voltage supplies. **Failure will result and all warranties will be void.**

### RAILING SAFETY INSTRUCTIONS

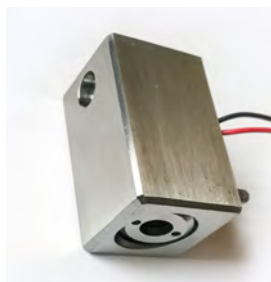
WAGNER ARCHITECTURAL SYSTEMS ARE ENGINEERED TO MEET IBC, ADA AND NFPA WHEN PROPERLY INSTALLED.

- Check and confirm all local railing code requirements
- A structural analysis may be required per local codes and is the responsibility of the customer
- Verify with the railing manufacturer that intended retrofit installations will not degrade the integrity of their railing
- **Caution:** It is highly recommended that a professional railing installer be used for ANY rail system, illuminated or not
- Please contact the factory for field installations: 888-243-6914 or email us: [systems@mailwagner.com](mailto:systems@mailwagner.com)

### BANTAM™ SQ SUPPLIED PARTS



DC/DC  
mA Regulator  
LUREG350/500



LULFXTS  
Bantam



Poke-Home  
Junction Box



Poke-Home  
Thru-Wire



Stainless Steel  
Security Mounting  
Screw and Bit



Scan QR Code  
for information about  
Poke-Home connectors.



@wagnercompanies



888-243-6914 // [rfq@mailwagner.com](mailto:rfq@mailwagner.com)  
10600 West Brown Deer Road // Milwaukee, WI 53224, USA

© 2022 R&B Wagner, Inc. All Rights Reserved.  
[WagnerCompanies.com](http://WagnerCompanies.com)  
LUBS INST R3

# BANTAM™ SQ

## Installation Instructions

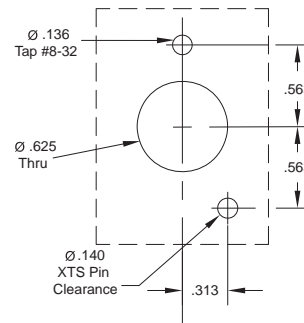
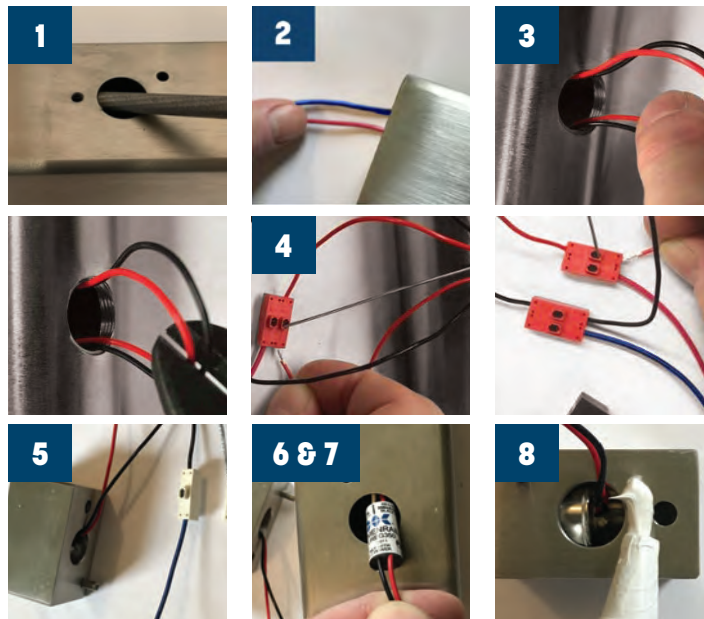
Another Lumenrail® Component for Life Safety and Light



### INSTALLATION

**TO REDUCE RISK OF ELECTRIC SHOCK, TURN OFF THE ELECTRICAL SUPPLY BEFORE INSTALLING OR SERVICING THE LIGHT FIXTURES:** For retrofit applications and field drilling for Bantam™ installations, resealing the protective coating on railings that are not inherently corrosion resistant is required. Paint, cold galvanizing, or an equivalent material must be used to seal the bare metal surfaces prior to fixture installation.

1. Ensure Bantam SQ mounting hole (0.625") is deburred inside and out. Removal of all sharp edges is necessary to protect conductors that pass through the opening.
2. Install 24VDC positive (+) and negative (-) wires (by others) down the length of the handrail and/or into the posts. Refer to the remote distance chart for wire gauge/distance recommendations.
3. Carefully pull a loop of the 24VDC main wires out of each Bantam mounting hole. Cut the wires at the center of each loop and strip insulation ends back 1/8".
4. Install the Poke-Home Junction Box connectors (red) to both ends of the 24VDC main wires and the DC regulator input. Ensure that the polarity of conductors from the regulator connect to the correct polarity of the main 24VDC wires.
5. Install a Poke-Home Thru-Wire connector (white) to both output wires, positive (+) and negative (-) on the DC regulator. Connect the corresponding polarity leads from the Bantam on the other end.
- 6&7. Carefully feed wires, Poke-Home connectors, and DC regulator through the mounting hole, into the railing. Push components into rail to clear mounting hole. Carefully feed the remaining wire into the rail and align the Bantam SQ with the screw and roll-pin holes in the post. Lightly tighten the screw with the included security bit. Repeat process for additional fixtures.
8. After the system is tested, loosen fixture and place a 1/8" x 1/4" bead of silicone caulk between the mounting and wiring holes on the back of the housing. Apply Loctite® Threadlocker Blue 242® (or equivalent) to the exposed screw threads to prevent loosening.
9. Finish seating the Bantam SQ fixture and wipe off any excess silicone or Loctite®. Repeat process for additional fixtures.
10. Repeat process for additional fixtures. Reverse this process if removal is required. Retain the tool and instructions to leave them with the facility for any future maintenance.



Mounting Pattern.  
Not to scale.

Bantam™: Quantity, Distance & Conductor Specification Sample				
Wire Gauge	16 AWG	14 AWG	12 AWG	10 AWG
Remote Distance to First Bantam	20'	45'	70'	95'

Suitable Values for 500mA Drive Current With:

36 Bantams on post spacing (7' intermediate conductors) using our 100W standard driver  
20 Bantams on post spacing (7' intermediate conductors) using our 100W USA driver

Actual distances will vary depending on the total load, drive current, wire gauge and fixture spacing. Verify all distance calculations with overall design of system. Conductor supply and gauge specification by others.



@wagnercompanies



888-243-6914 // rfq@mailwagner.com  
10600 West Brown Deer Road // Milwaukee, WI 53224, USA

© 2022 R&B Wagner, Inc. All Rights Reserved.  
WagnerCompanies.com  
LUBS INST R3