



CUFF™ POST SCONCE™

Another Lumenrail® Component
for Life Safety and Light

@2022 Korom Photography

INDIRECT POST SCONCE LUMINAIRE

This post-mount luminaire is designed for way-finding, path illumination from railing posts. The Cuff™ Post Sconce™ is a series of concentric housing shapes that gently reflect illumination onto surrounding surfaces. Cuff is available in staid architectural forms and organic curves with incised options available to add patterns of light to your design.

Thoughtfully designed housing combined with the included 316 stainless steel hardware provide superior harsh environment protection and vandal resistance.

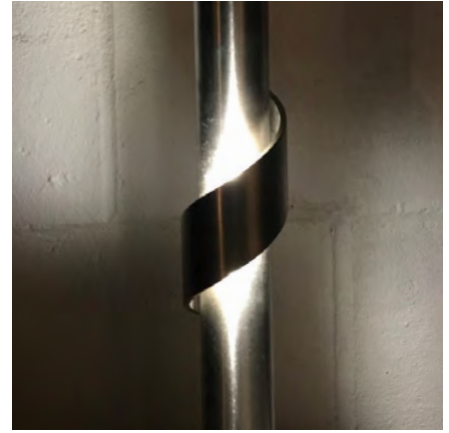


LULF6630K5CF-SQSB4

- Solid laser cut 316 stainless steel housings
- Pipe sections encircle posts with mechanical attachment
- 116 lumens per watt LED (500mA)
- IK10 impact rating
- 24VDC operation
- ETL wet location listed
- IP67 ingress protection
- Standard in 2700 K, 3000 K and 4000 K
- 4 CCT whites and solid colors available
- Available on fabricated Lumenrail® Systems only



SCAN QR CODE
for technical information,
downloads and instructions.



PROJECT NAME: _____

REP AGENCY: _____

APPROX. LINEAR FT: _____

SERVICE OPTIONS: Field Measure Job Site Support System Installation



SCAN QR CODE
for technical information,
downloads and instructions.

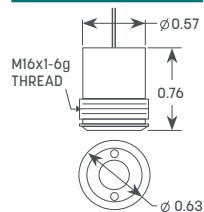
PART NUMBER BUILDER Cuff is available on fabricated Lumenrail® Systems only.

| | | | | | | | |
|---|---------------------------------------|--|---|---|--|--|--|
| LULF9040K3CF- WPINBLM | LULF | | | | CF- | | |
| EXAMPLE | FIXTURE TYPE | POST SIZE | COLOR TEMP | DRIVE CURRENT | HOUSING | INCISED | FINISH |
| <i>* Indicates stock. Other options may require additional lead-time.</i> | LULF- Lumenpod® 16 Light Engine | 66 - 1.66" (42MM) Dia Schedule 40 Pipe 90 - 1.90" (48mm) Dia Schedule 40 Pipe | *27K- 2700 K *30K- 3000 K *40K- 4000 K 50K- 5000 K | BLU- Blue GRN- Green RED- Red AMB- Amber | *5 - 2.2W @ 500 mA *3 - 1.7W @ 350 mA | AC- Arc CW- Crown SQ- Square WP- Wrap | IN- Laser Incised CI- Custom Incised SB4- Satin Brush #4 BLM- Blast Matte <small>Leave field blank for solid housing options. Custom Laser Incised option requires digital work.</small> |

ELECTRICAL SPECIFICATIONS

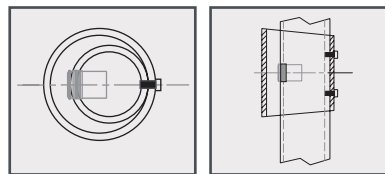
| | | | | |
|--|---------------|--------------------------------|-------------|-----------------|
| <p>Intertek</p> <p>All electrical connections to be made by a qualified electrician in accordance with all national, state and local electrical codes.</p> | 24VDC | ETL LISTED WET, IK10, IP67, CE | 0-10V INPUT | -40°F TO +120°F |
| | INPUT VOLTAGE | CERTIFICATIONS | DIMMING | OPERATING TEMP |
| CLASS 2 REQUIRED | 5 YEARS | UP TO 116 LM/W LED | 80+ | 8" |
| DRIVER | WARRANTY | EFFICIENCY | CRI | WIRE LENGTH |

LIGHT ENGINE



The Lumenpod® 16's threaded stainless steel body dissipates heat directly into the mounting material. A machined shoulder positions it nearly flush with any diameter handrail, post, flat or square stock.

HOUSING



Our Cuff™ Post Sconce™ housings are fabricated on a 5-axis tube laser. The schedule 10 pipe is carved to shape to create an offset concentric housing that wraps around the post. The incised options radial laser patterns are biased to the light center for dynamic visuals.

LUMENGEAR™ LED DRIVER & NEMA ENCLOSURE OPTIONS

Wagner offers multiple ETL listed options for both 24VDC power supplies and NEMA enclosures. Quantities and types will be configured based on your specifications and design. Additional specification options are available by request. Not all options apply to all products. Please verify compatibility with the factory.

CLASS II DRIVERS:

- STD 100W
- Dali, DMX, 0-10V Dimming Protocols
- Multiple Wattages
- Made in USA Units Available

NEMA ENCLOSURES:

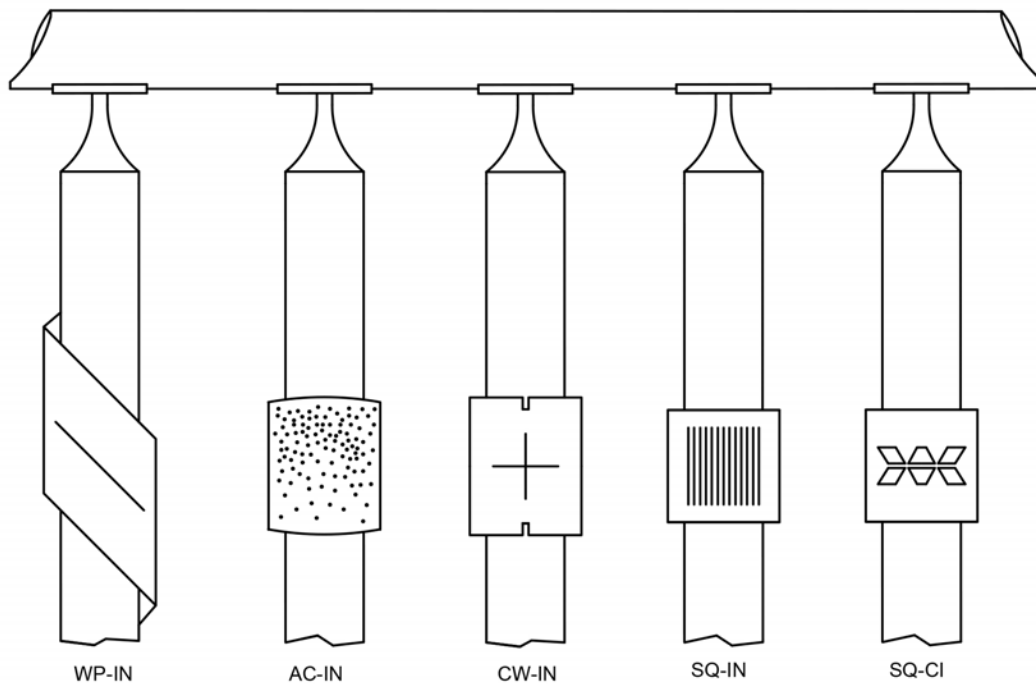
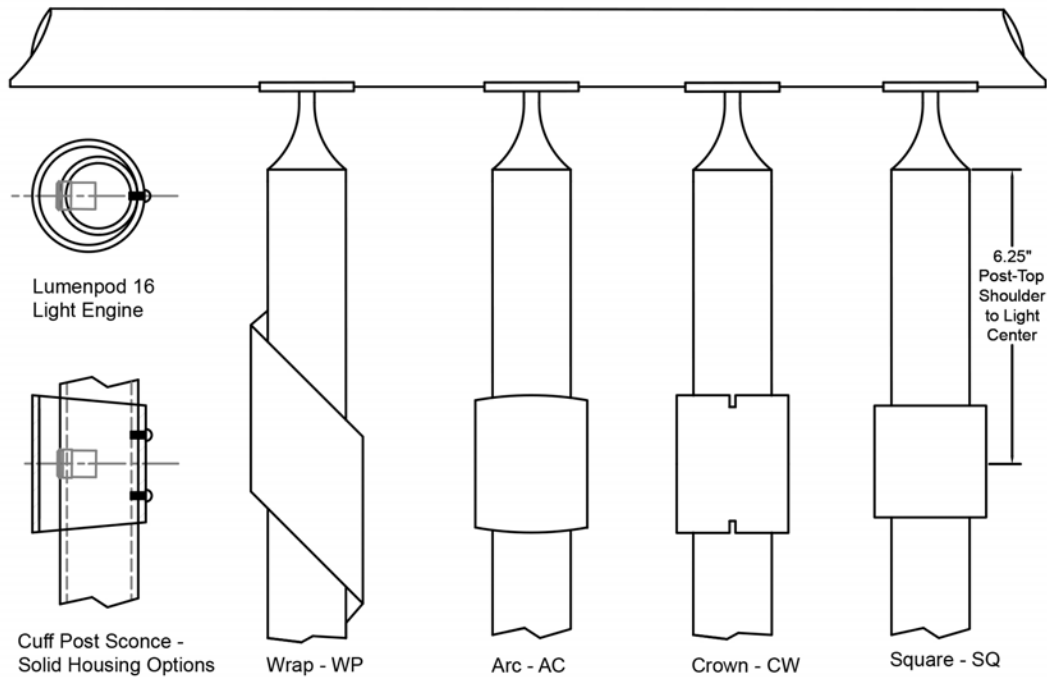
- 4X - Polycarbonate
- 4X - Painted Steel
- 4X - Stainless Steel

Specifications subject to change without notice. Verify data at time of order.

@wagnercompanies



Cuff is available on fabricated Lumenrail Systems only



Cuff Post Sconce - Incised Housing Options (+IN)

All solid Cuff housings are available with a laser incised pattern option. The pattern is radial to the center of the housing. This effect allows direct glimpses of the output through the perforations.

Cuff Post Sconce - Custom Incised Option (+CI)

Custom patterns are available with some image constraints. Please supply digital artwork for custom pattern or logo review.